





M.230

Safety solution for industrial and production machines

Functions

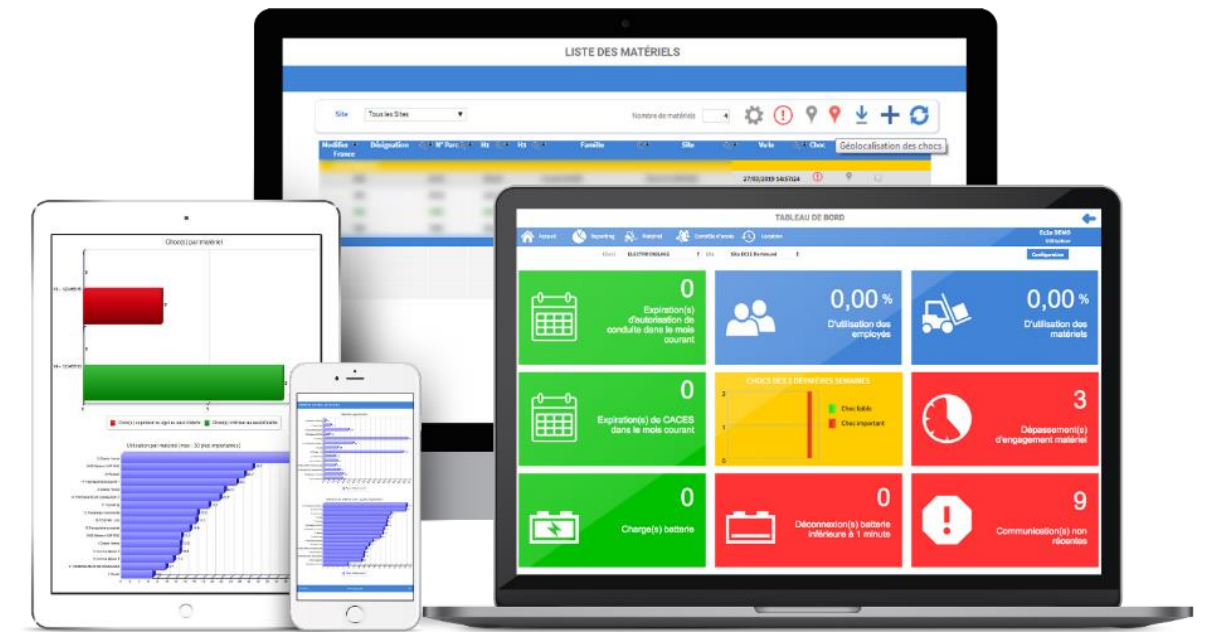
The M.230-solution and the special management platform are specially adapted to the production tools such as machine tools (eg.: panel saws and carpet unwinding machines). They have many advantages and enable you to:

Access control

- To start the machine
- Access the control only for authorised people using a name badge

Management platform

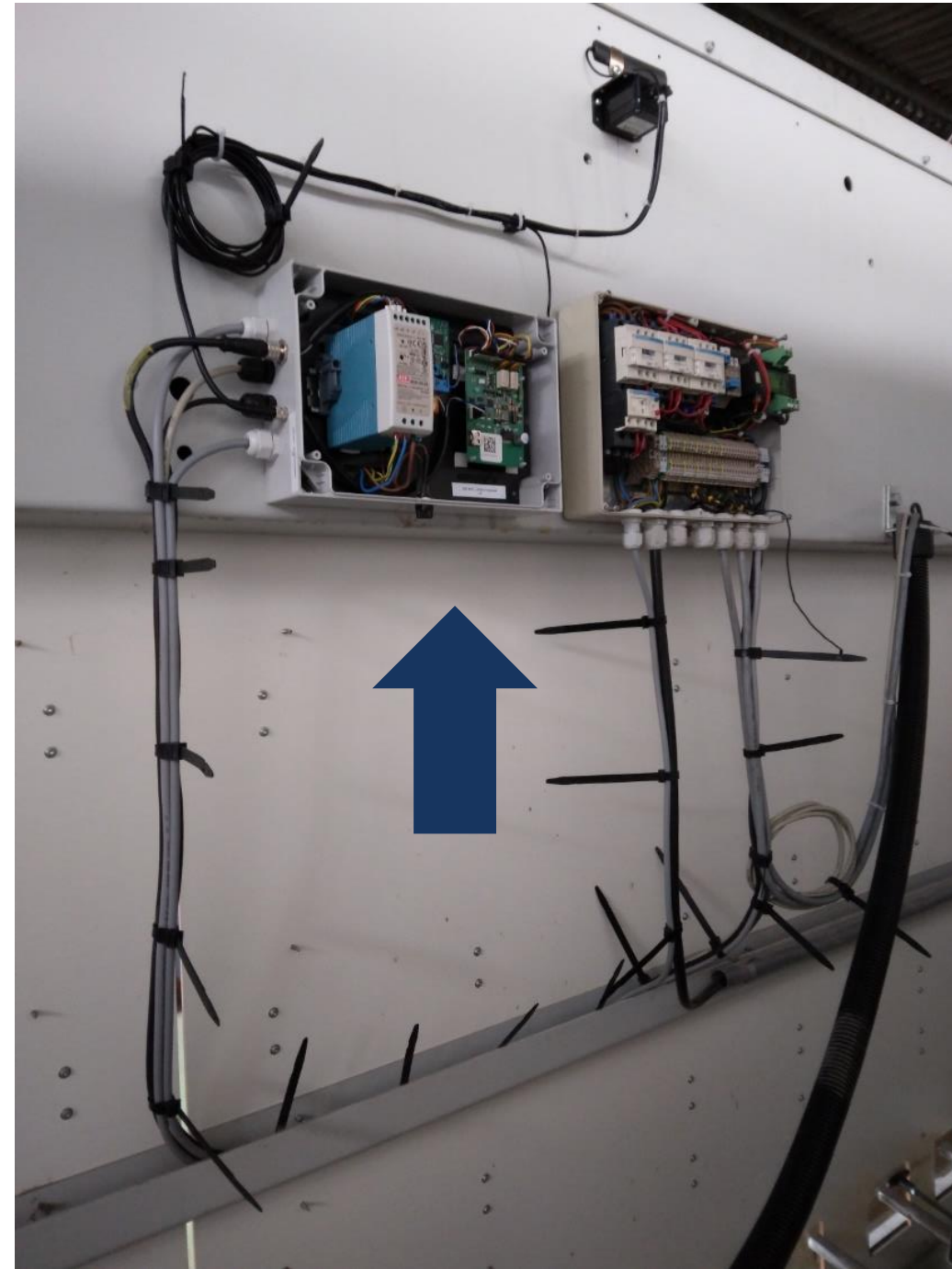
- Know the timing of usage of the machines
- Manage maintenance contracts based on the actual usage hours
- Quantify machine wear



Example of installation



Badge reader installed on the front of the saw for **user identification.**



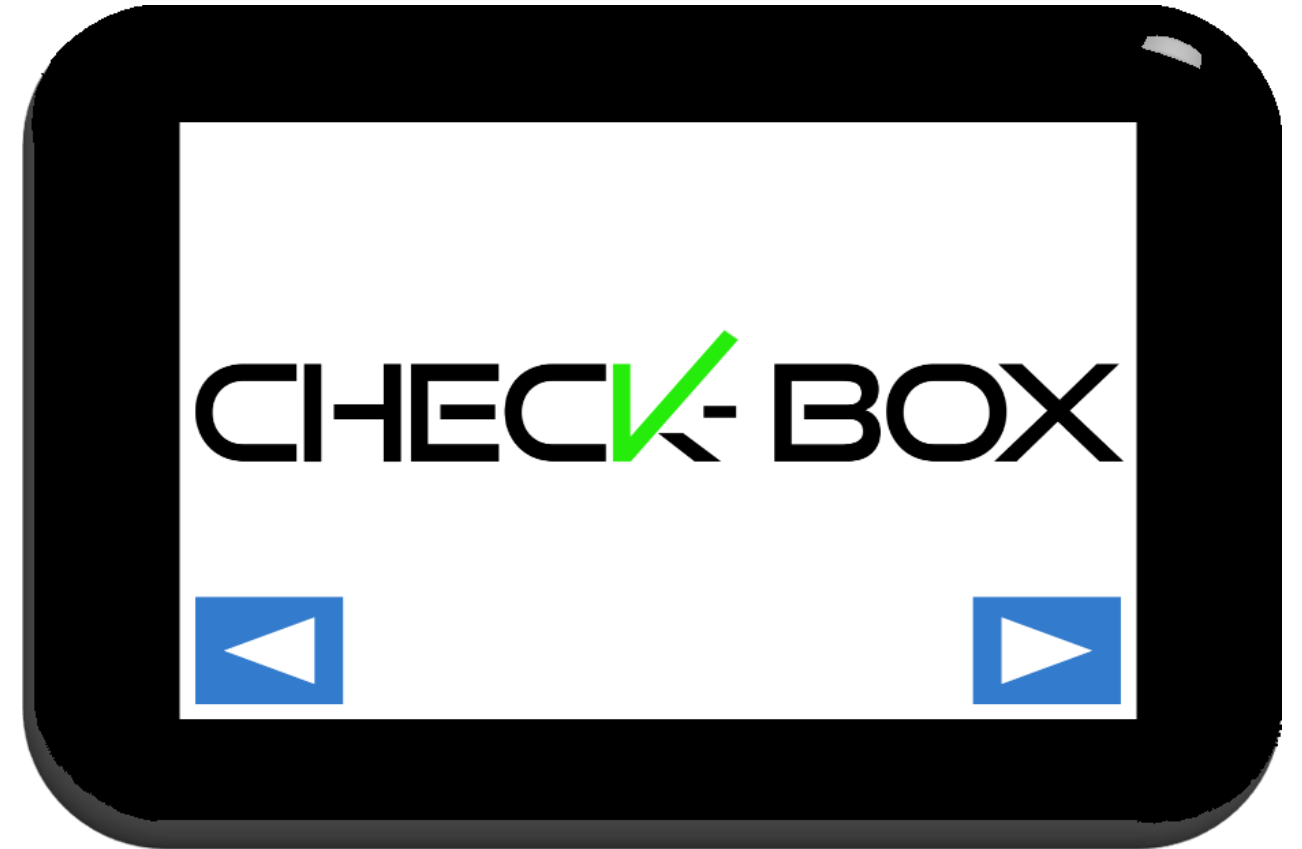
'Control Box' deported to the back of the saw (wired part).

Check-Box

To continue to secure the use of your machines the Check-Box is an electronic and completely adaptable daily verification solution.

This allows you to:

- Make a list with important checkpoints that need to be checked before use ('checklist') – with the possibility to block questions
- The verification of these secure points demanded before you start
- To have traceability of the answered questions
- Responsibility feeling put with the driver
- Collect data like a full report



Example of installation



Checkbox installed on the saw.
The operator has to badge first and then answer several questions presented on the checkbox. If the answers do not trigger a blocking of the machine, the saw is able to start.



They trust us...



V2S, The technology for your safety.

Together we would like to find a solution for your
Visinility and safety problems.

info@v2s.eu
0032/485.03.75.88